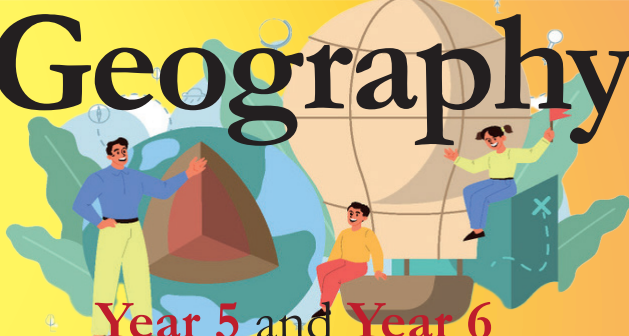


Geography



Year 5 and Year 6

In KS2 Pupils should be taught:

Locational knowledge

• Locate the world's countries, using maps to focus on Europe (including the location of Russia) and North and South America, concentrating on their environmental regions, key physical and human characteristics, countries, and major cities

• Name and locate counties and cities of the United Kingdom, geographical regions and their identifying human and physical characteristics, key topographical features (including hills, mountains, coasts and rivers), and land-use patterns; and understand how some of these aspects have changed over time

• Identify the position and significance of latitude, longitude, Equator, Northern Hemisphere, Southern Hemisphere, the Tropics of Cancer and Capricorn, Arctic and Antarctic Circle, the Prime/Greenwich Meridian and time zones (including day and night)

Place knowledge

• Understand geographical similarities and differences through the study of human and physical geography of a region of the United Kingdom, a region in a European country, and a region within North or South America

Human and physical geography

• Describe and understand key aspects of:

- Physical geography, including: climate zones, biomes and vegetation belts, rivers, mountains, volcanoes and earthquakes, and the water cycle
- Human geography, including: types of settlement and land use, economic activity including trade links, and the distribution of natural resources including energy, food, minerals and water

Geographical skills and fieldwork

• Use maps, atlases, globes and digital/computer mapping to locate countries and describe features studied

• Use the eight points of a compass, four and six-figure grid references, symbols and key (including the use of Ordnance Survey maps) to build their knowledge of the United Kingdom and the wider world

• Use fieldwork to observe, measure, record and present the human and physical features in the local area using a range of methods, including sketch maps, plans and graphs, and digital technologies

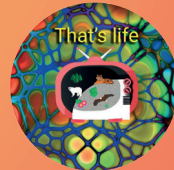
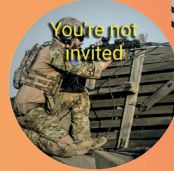
SUBJECT AIMS - By the end of KS2 children at WVPS will:

- Have accessed the broad range of geographical knowledge and skills in the National Curriculum
- Have knowledge of the oceans, continents and countries and how these can be located on a world map
- Be confident in using a range of geographical resources to further an understanding of the world
- Aspire to explore both the local area and the wider world through a curiosity of climates, landscapes and physical and human geographical features
- Develop a 'sense of place' to help the children better understand the changing physical and human world around them.

National Curriculum Links



Year 5



Term

Year 6

National Curriculum Links



Autumn 1

Autumn 2

Spring 1

Spring 2

Summer 1

Summer 2

inspireenjoyachieve



School Site Orienteering



Immersive Room



Now Press Play Experiences



Field Trips